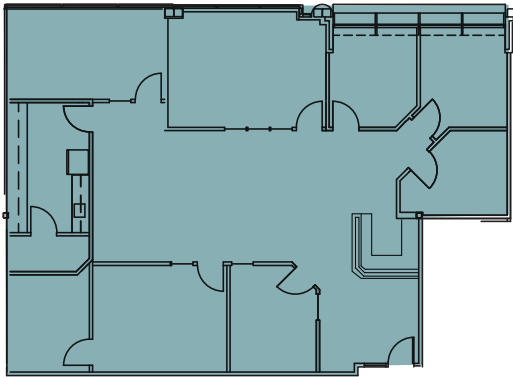


# WESTPARK

BUSINESS PARK

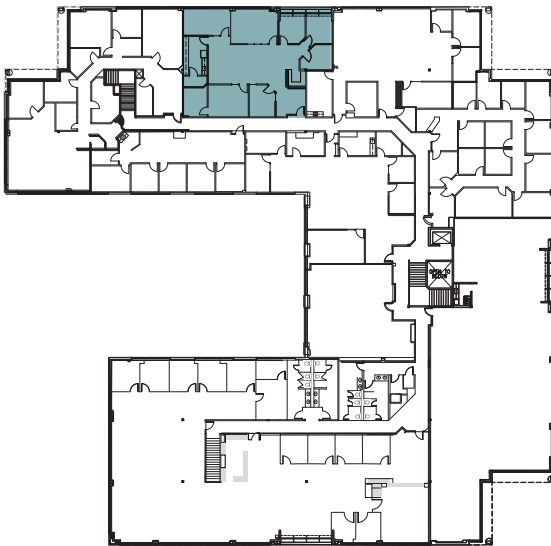
8620 154TH AVENUE NE  
REDMOND, WA

## Building N // Suite 210



2,603 SF  
AVAILABLE OFFICE

None  
AVAILABLE WAREHOUSE



2,603 SF  
TOTAL AVAILABLE

### FOR LEASING INFORMATION CONTACT

**MARK FLIPPO**  
JLL  
425.974.4007  
mark.flippo@am.jll.com

**JASON BLOOM**  
Kidder Mathews  
425.450.1102  
jason.bloom@kidder.com

### OWNED BY



PACIFIC OAK

[WESTPARKREDMOND.COM](http://WESTPARKREDMOND.COM)

This information supplied herein is from sources we deem reliable. It is provided without any representation, warranty or guarantee, expressed or implied as to its accuracy. Prospective Buyer or Tenant should conduct an independent investigation and verification of all matters deemed to be material, including, but not limited to, statements of income and expenses. Consult your attorney, accountant, or other professional advisor.

