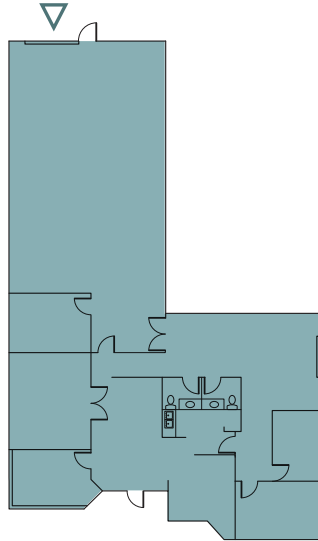


WESTPARK

BUSINESS PARK

15223 NE 90TH ST
REDMOND, WA

Building U // Suite 140



2,258 SF

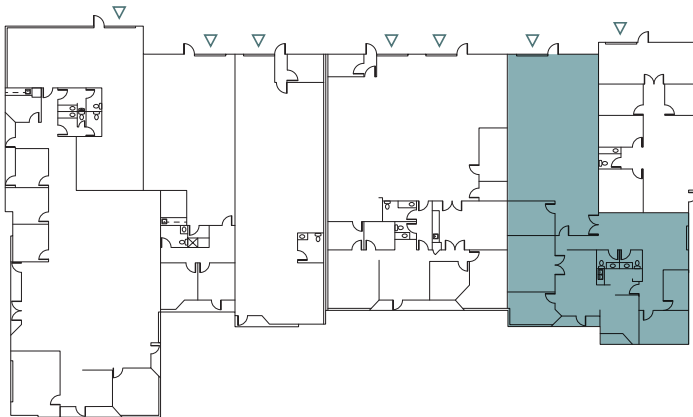
AVAILABLE OFFICE

1,850 SF

AVAILABLE WAREHOUSE

4,108 SF

TOTAL AVAILABLE



△ GRADE LEVEL
▲ DOCK HIGH

FOR LEASING INFORMATION CONTACT

MARK FLIPPO

JLL
425.974.4007
mark.flippo@am.jll.com

JASON BLOOM

Kidder Mathews
425.450.1102
jason.bloom@kidder.com

OWNED BY



PACIFIC OAK

WESTPARKREDMOND.COM

This information supplied herein is from sources we deem reliable. It is provided without any representation, warranty or guarantee, expressed or implied as to its accuracy. Prospective Buyer or Tenant should conduct an independent investigation and verification of all matters deemed to be material, including, but not limited to, statements of income and expenses. Consult your attorney, accountant, or other professional advisor.

